

FOR LEASE IN CARY



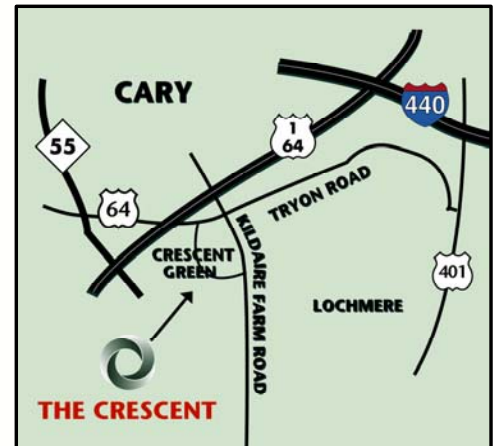
115 CRESCENT COMMONS UP TO +/-11,891 SF AVAILABLE

- Mixed-use building design, with above standard electrical and telephone/data capacity. State-of-the-art energy management system with multi-zoned constant air volume HVAC.
- Standard tenant finishes include full-height, solid-core wood doors, 2'x4' parabolic lighting fixtures, horizontal mini-blinds, and 2'x2' ceiling grid with tegular ceiling tiles.
- 5.0 parking spaces per 1,000 SF.
- Office, Medical Office, or Retail are possible uses.
- Short walk to The Crescent Harris-Teeter/Wal-Mart center, one of the strongest in the Harris-Teeter chain. Western WakeMed, high-income rooftops, and significant office users all within a 1-mile radius make this a dynamic retail site.
- Nearby amenities include shopping, banking, hotels and restaurants with housing in all price ranges in close proximity to the site.
- \$23.00 psf full-service rental rate.

Available 11/1/10:
+/-9,044 SF of Class "A" office space. Space is located on the 1st floor.

Sublease Space:
Sublease space also available: **+/-2,847 SF** on the 2nd floor.

115 Crescent Commons:
A two (2) story orchard stone, EFIS and glass mixed-use (office/retail/medical) Class "A" office building totaling 18,500 SF, located in the Crescent, a 138-acre mixed-use park.



**115 CRESCENT GREEN
CARY, NORTH CAROLINA 27518**

Information provided herein is secured from sources presumed to be reliable. However, all information is subject to verification.

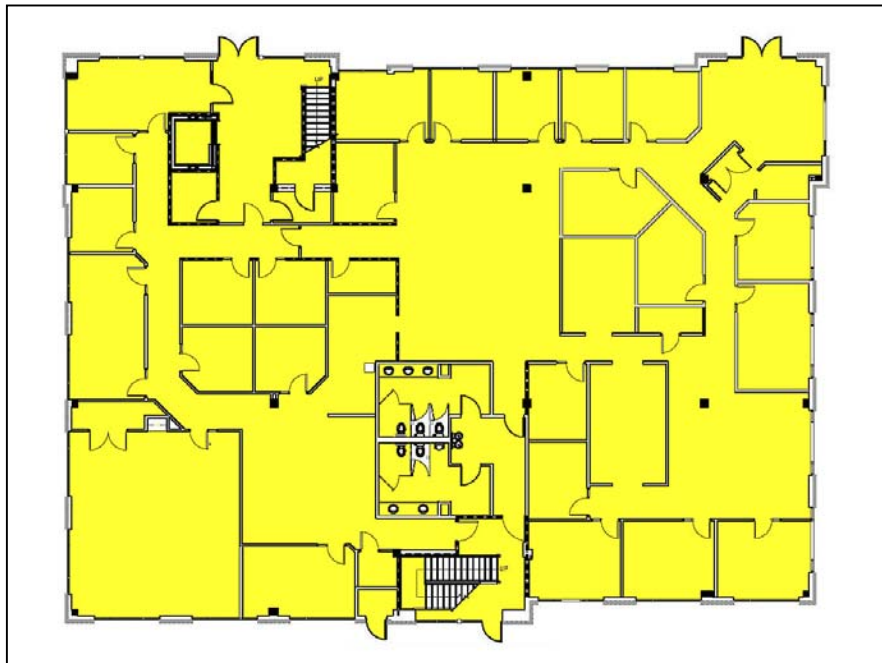
CAPITAL ASSOCIATES®

Bret Muller (919) 233-9901 phone (919) 233-9905 fax

115 CRESCENT COMMONS

+/- 9,044 SF
ON 1st FLOOR

AVAILABLE



+/-2,847 SF
ON 2nd FLOOR

AVAILABLE



For more information, contact:

Bret Muller (919) 233-9901

email bmuller@casso.com

or visit www.casso.com

Information provided herein is secured from sources presumed to be reliable. However, all information is subject to verification.

l e a s i n g & m a n a g e m e n t b y

CAPITAL ASSOCIATES®

1255 Crescent Green, Suite 300 Cary, North Carolina 27518 (919) 233-9901 phone (919) 233-9905 fax