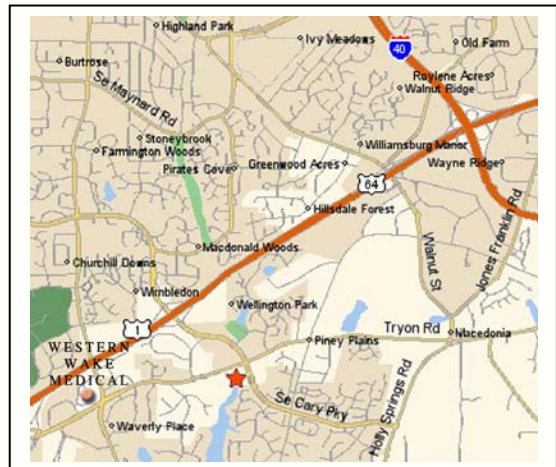


FOR LEASE IN CARY



TRYON OFFICE CENTER II APPROXIMATELY 2,089 SF AVAILABLE

- Suitable for medical or non-medical.
- Located at the corner of Cary Parkway and Tryon Road, just minutes from U.S. 1/64 and Western Wake Hospital.
- Convenient and generous parking (4.67 spaces/1,000 USF).
- Oversized elevator; front and back entrances with automatic doors.
- Attractive interior and exterior design, enhanced with abundant landscaping.
- Convenient to banks, restaurants, hotels, shopping, and fine residential neighborhoods.



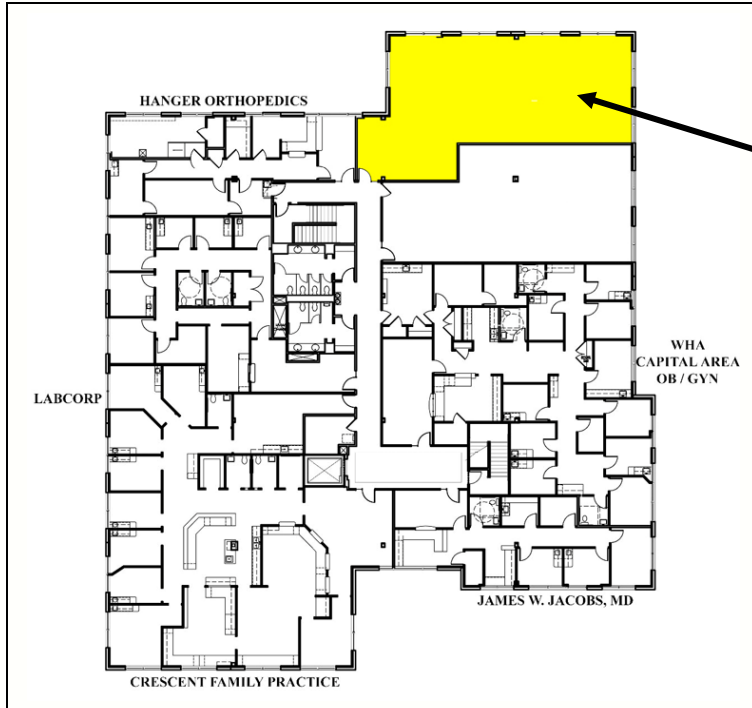
**1110 SE CARY PARKWAY
CARY, NORTH CAROLINA 27518**

Information provided herein is secured from sources presumed to be reliable. However, all information is subject to verification.

CAPITAL ASSOCIATES®

Tripp Bradshaw (919) 233-9901 phone (919) 233-9905 fax

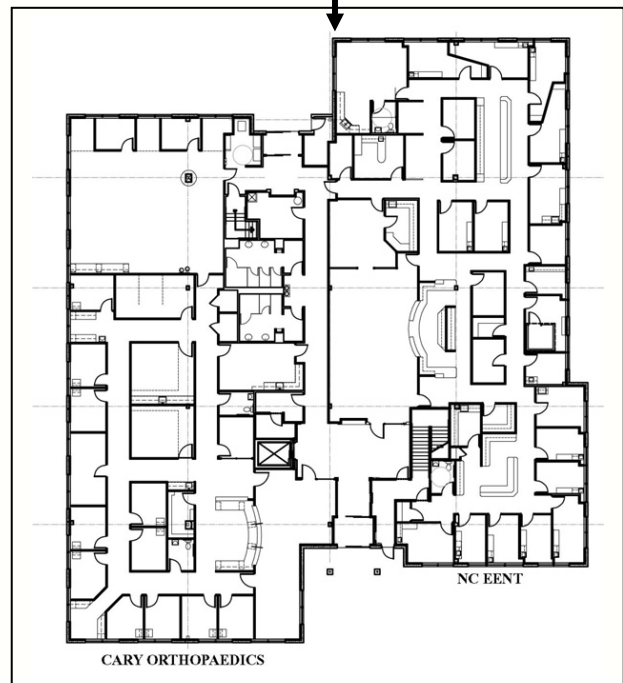
TRYON OFFICE CENTER II



PHASE II

**SECOND FLOOR
2,089 SF
AVAILABLE**

**FIRST FLOOR
FULLY LEASED**



For more information, contact:

Tripp Bradshaw
(919) 233-9901

email tbradshaw@casso.com

or visit www.casso.com

Information provided herein is secured from sources presumed to be reliable. However, all information is subject to verification.

l e a s i n g & m a n a g e m e n t b y

CAPITAL ASSOCIATES®

1255 Crescent Green, Suite 300 Cary, North Carolina 27518 (919) 233-9901 phone (919) 233-9905 fax