

FOR LEASE IN CARY

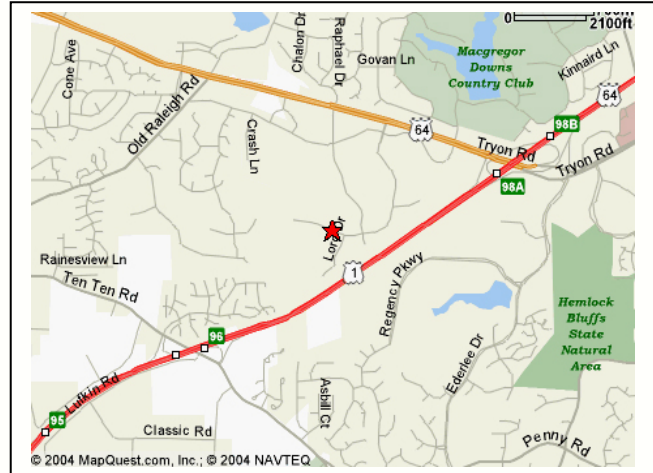


**500 GREGSON DRIVE
MACGREGOR PARK
SUITE 175 - 3,053 SF**

Available Immediately: 3,053 SF of space, located on a 33-acre site in pine-shaded MacGregor Park.

The total facility consists of approximately 108,000 SF of interior space, surrounded by surface parking for 1,200 cars. Just minutes away from the RTP, Raleigh/Durham airport, downtown Raleigh and close proximity to first-rate housing, restaurants and retail.

- Flexible office space designed to serve a variety of users.
- Excellent call center or data center space.
- Emergency backup power available.
- Abundant parking to accommodate above standard requirements.
- Parking for up to eight (8) per thousand.
- Beautiful Campus Setting.



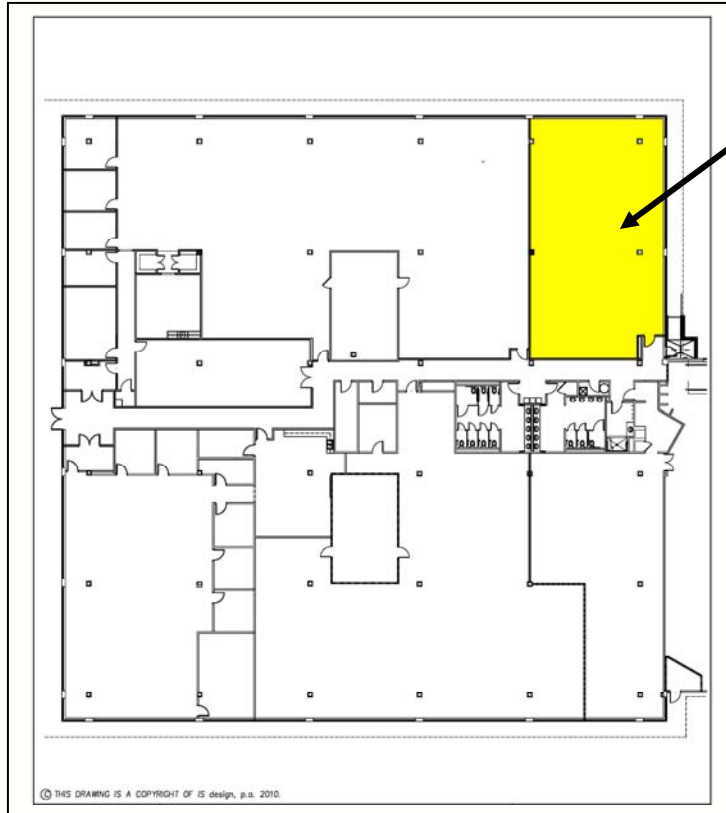
**500 GREGSON DRIVE
CARY, NORTH CAROLINA 27511**

Information provided herein is secured from sources presumed to be reliable. However, all information is subject to verification.

CAPITAL ASSOCIATES®

Tripp Bradshaw (919) 233-9901 phone (919) 233-9905 fax

500 GREGSON DRIVE



3,053 RSF
AVAILABLE

500 GREGSON DRIVE IN MACGREGOR PARK

For more information, contact:

Tripp Bradshaw

(919) 233-9901

email tbradshaw@casso.com

or visit www.casso.com



Information provided herein is secured from sources presumed to be reliable. However, all information is subject to verification.

l e a s i n g & m a n a g e m e n t b y
CAPITAL ASSOCIATES®

1255 Crescent Green, Suite 300 Cary, North Carolina 27518 (919) 233-9901 phone (919) 233-9905 fax